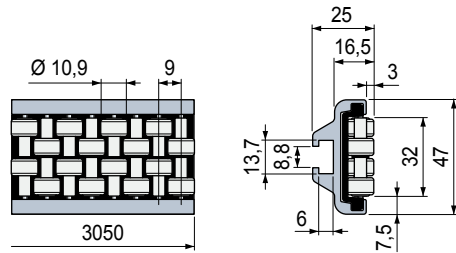
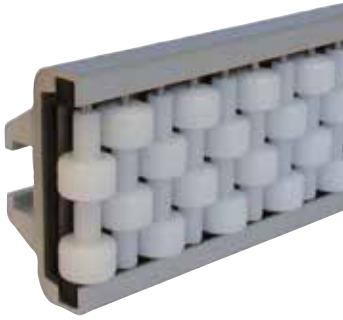


Part. **S0856**

■ Roller side guides

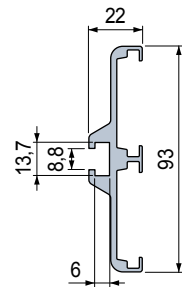


Rollers material	Code	Weight kg
Acetal POM (white)	645203	1,20

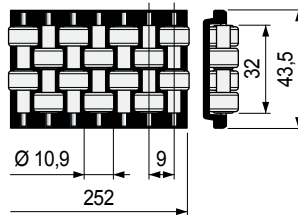
- Material: metal profile in anodized aluminium, rollers module in acetal POM (black), roller pins in stainless steel.
- Standard packaging: strands 3,05 metres.
- Packaging: 2 strands.

The roller side guides can be supplied with separated components.

Metal profile



Roller module



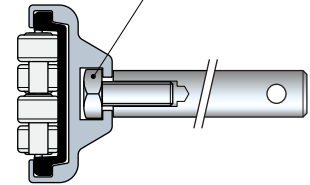
Length mm	Code	Rollers material	Code
3050	607933	Acetal POM (white)	644673
6100	607943		

- Material: anodized aluminium.
- Weight: 0,85 Kg/m.
- Packaging: 1 strand.

- **Characteristics** Part. S0856
 - Self supporting structure.
 - Anodized aluminium profile.
 - Quick and easy installation by standard bolts.
 - Can be used straight running and sideliflexing.

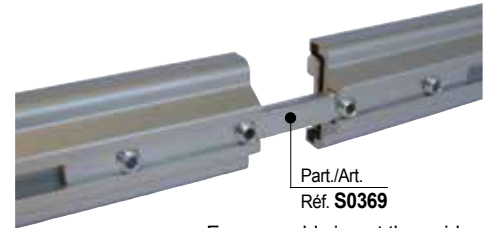
• **Assembly** Part. S0856

M8 hex head bolt



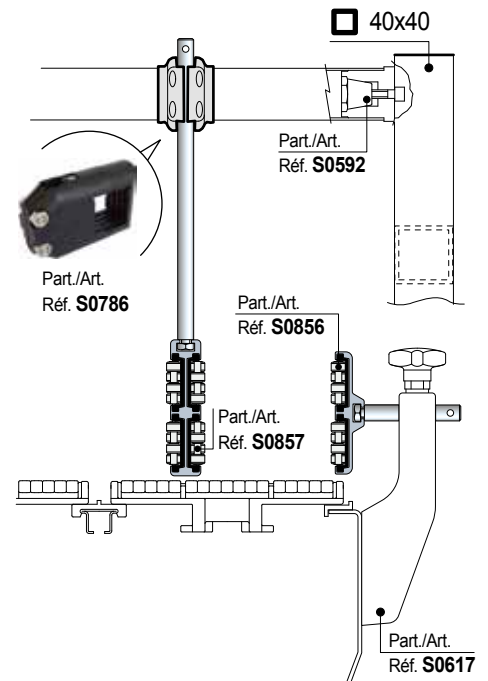
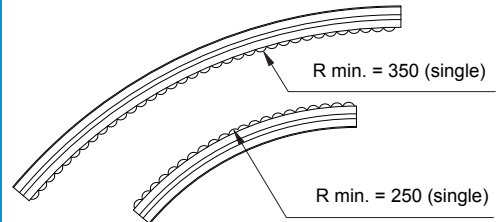
• **Accessories**

Part. S0369 - Connecting bar



For assembly insert the guides and tighten the set screw.

• **Min. curvature radius** Part. S0856



● Best Seller

● Standard

● On request: minimum quantity may apply. Consult our Customer Service for availability.

Item code for order = Part. + Code