

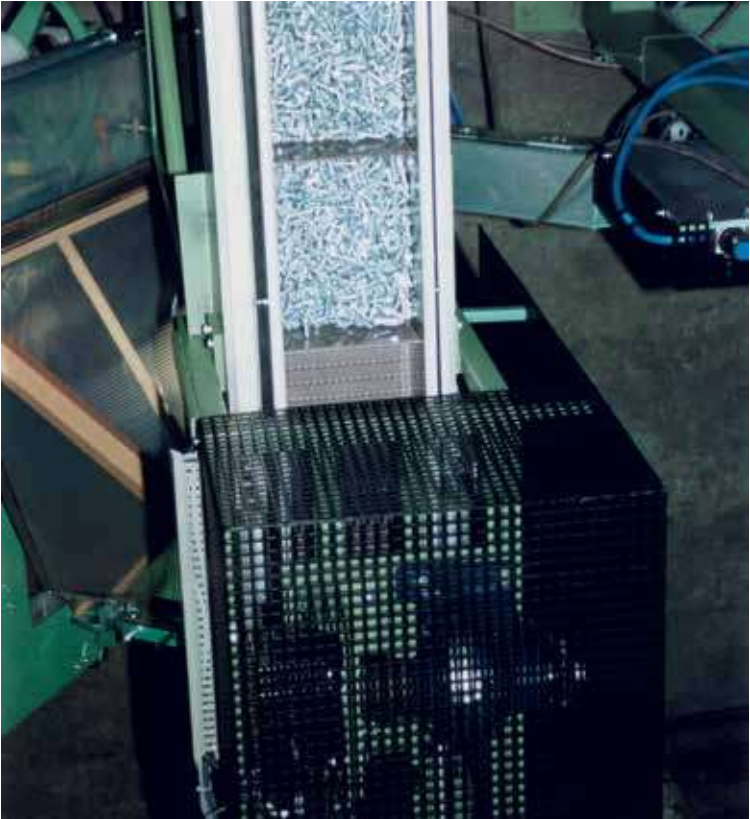
The 8500-Series ¾-inch pitch belt has several strong design features, making it suitable for amongst others beverage, packaging and food industry. The small belt pitch ensures a smooth operation. 8500-Series is available in a closed and an open execution. Mold-to-width executions are available with Tab guides for single line applications. As a standard the belts are supplied in high-performance acetal and in polypropylene.

Features

- Perfect product handling due to the small pitch and superior low friction HP material. The stiffness of the modules results in an optimum belt flatness.
- The small 19.05 mm pitch reduces the chordal action and permits the use of short transfer plates.
- Rounded outside edges for better side transfers and improved product handling.
- Twist-lock™ pin retention by means of a hinged plug prevents plug loss and allows easy pin access for installation and maintenance.
- 8500-Series belt is companioned by FTM 1060, FGM 1050 or FT 1050 chainbelts, to make a perfect match between straight running and sideflexing conveyors.



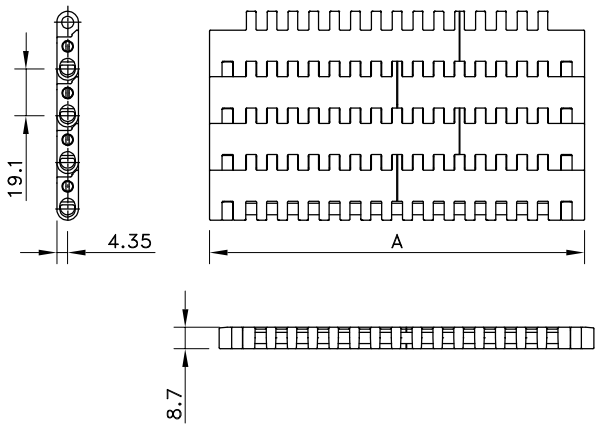
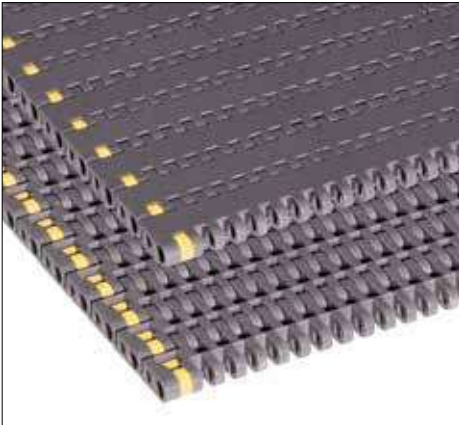
Empty 3-Piece cans on HP8506 K450 MTW



Bolt elevating on 8505 belt

Programme	
8505 Solid Top 8506	Closed surface and high strength make it suitable for both glass and PET containers
Perforated Top	22% Open area for optimum water- and airflow; suitable for amongst others can making and can processing environment
DTS®	Single module Dynamic Transfer System for left- or right-hand self-clearing transfers to avoid dead plates at 90° transfers; as a standard equipped with Positrack guiding
Belt Accessories	Flights, sideguards and hold-down tabs for special applications in food industry

Solid Top 8505



Assembly	Belt Type	Code Number*	Temperature range °C		Working Load (max.)	Weight	Backflex Radius (min.)
			Dry	Wet			
					N/m (21°C)	kg/m²	mm

HP-Acetal with Polypropylene Pins							
Standard	HP 8505	I8505HPKxx	-40 to +80	-40 to +65	29000	8.89	25
DTS Left/Positrack	HP 8505 K450 DTS-SX	81415811					
DTS Right/Positrack	HP 8505 K450 DTS-DX	81415791					

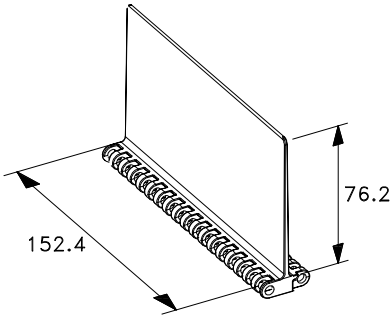
WHT-Polypropylene with Polypropylene Pins							
Standard	WHT 8505	I8505HTKxx	5 to 105	5 to 105	16000	5.96	25

* In code numbers xx corresponds with the belt width (A). Standard widths of these belts begin at 6", with 6" increments up to 120"; special widths begin at 2 1/3" with 1/3" increments. See also page 208.

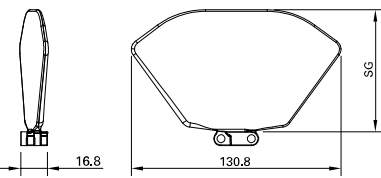
If you require flights, sideguards or tab guides, please describe the belt by choosing from the options listed in the 2nd column of the table:

Material	HP or WHT	
Belt type	8505	
Width (A)	K.. (in inches)	Belts with flights have a minimal width of 6"
Flights	F3 or F2 or F1 or H..	Standard height of 3", 2", 1" or special height in mm
Pitch between flights	T..P	Flights on every .. th row; with sideguards it must correspond to an even number of rows
Flight side-indent	N.. (in inches)	Any indent with increments of 0.25IN is possible
Sideguards	SG2 or SG1	Standard height of 2" or 1"
Tab guides	D..	TAB1 is only one row; TAB2 is two rows
Distance between Tabs		Minimal 3" with increments of 3/8"
Pitch between Tabs	D..P	Must correspond to an even number of rows

Example: HP 8505 K16 1/3 F3 T4P N2 1/3 TAB2 D3 D4P is a 8505 Solid Top belt, made of dark grey acetal, width 16 1/3", 3" high flights on every 4th row at 2 1/3" from the sides, no sideguards and 2 rows of tabs with a distance in-between of 3" on every 4th row.

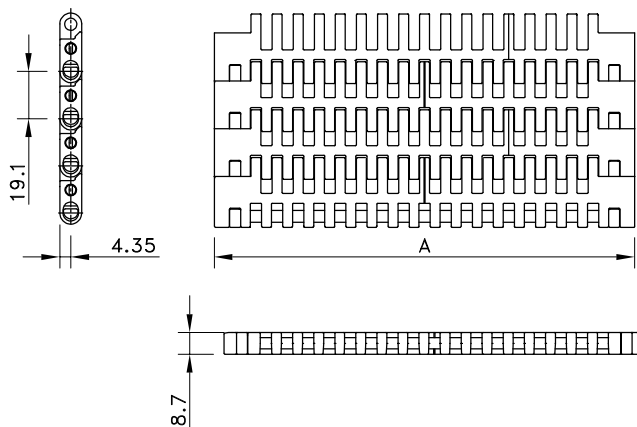
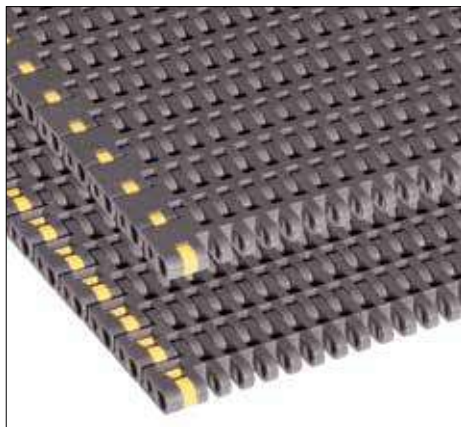


Sideguards 8500-series



Flight 8500-series for inclined applications

Perforated Top 8506



Assembly	Belt Type	Code Number*	Temperature range °C		Working Load (max.)	Weight	Backflex Radius (min.)
			Dry	Wet	N/m (21°C)	kg/m²	mm
HP-Acetal with Polypropylene Pins							
Standard	HP 8505	I8506HPKxx	-40 to +80	-40 to +65	29000	8.89	25
DTS Left/Positrack	HP 8505 K450 DTS-SX	81415811					
DTS Right/Positrack	HP 8505 K450 DTS-DX	81415791					
WHT-Polypropylene with Polypropylene Pins							
Standard	WHT 8506	I8506WHTKxx	5 to 105	5 to 105	16000	5.96	25

* In code numbers xx corresponds with the belt width (A). Standard widths of these belts begin at 6", with 6" increments up to 120"; special widths begin at 2 1/3" with 1/3" increments. See also page 208.

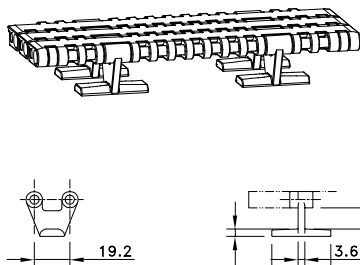
If you require flights, sideguards or tab guides, please describe the belt by choosing from the options listed in the **2nd** column of the table:

Material	HP or WHT	
Belt type	8506	
Width (A)	K.. (in inches)	Belts with flights have a minimal width of 6"
Flights	F3 or F2 or F1 or H..	Standard height of 3", 2", 1" or special height in mm
Pitch between flights	T..P	Flights on every .. th row; with sideguards it must correspond to an even number of rows
Flight side-indent	N.. (in inches)	Minimal 1 1/3" with 1/3" increments; in case of sideguards indents 1 1/2" or 2 1/4" only
Sideguards	SG2 or SG1	Standard height of 2" or 1"
Tab guides	TAB1 or TAB2	TAB1 is only one row; TAB2 is two rows
Distance between Tabs	D..	Minimal 3" with increments of 2/3"
Pitch between Tabs	D..P	Must correspond to an even number of rows

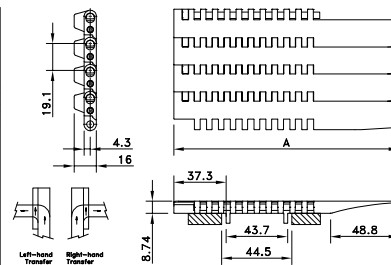
Example: WHT 8506 K7.50 SG2 N1 1/2 is a 8506 Perforated Top belt, made of white Polypropylene, width 7.5", 2" high sideguards at 1 1/2" from the sides. No flights, tab guides and DTS.



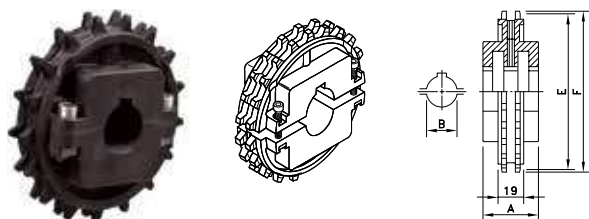
Tab guide 8500-series



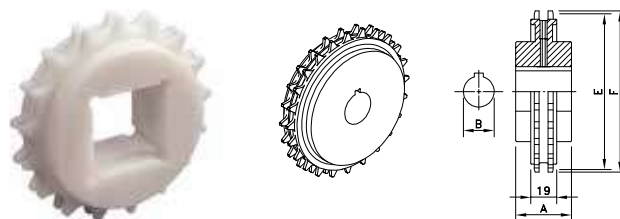
Dynamic transfer system 8500-series



Split Sprockets



Classic Sprockets



Sprocket Type	Code Number	Number of Teeth	Bore	Pitch Diameter E	Outside Diameter F	Hub Width A	
			B				
		mm	mm	mm	mm		
Split Sprockets							
Round Bores							
NS 8500 T17 R25	614-176-25	17	25	104.7	105.4	39	
NS 8500 T17 R30	614-176-30	17	30				
NS 8500 T17 R35	614-176-35	17	35				
NS 8500 T21 R25	614-239-1	21	25	129.0	130.0		
NS 8500 T21 R30	614-239-2	21	30				
NS 8500 T21 R35	614-239-3	21	35				
NS 8500 T21 R40	614-239-4	21	40	147.3	148.3		
NS 8500 T24 R25	614-188-25	24	25				
NS 8500 T24 R30	614-188-30	24	30				
NS 8500 T24 R35	614-188-35	24	35	153.4	154.7		
NS 8500 T25 R25	614-192-25	25	25				
NS 8500 T25 R30	614-192-30	25	30				
NS 8500 T25 R35	614-192-35	25	35				
Square Bores							
NS 8500 T17 S25	614-177-1	17	25	104.7	105.4	39	
NS 8500 T17 S30	614-177-2	17	30				
NS 8500 T17 S35	614-177-3	17	35				
NS 8500 T21 S25	614-240-1	21	25	129.0	130.0		
NS 8500 T21 S40	614-240-2	21	40				
NS 8500 T21 S60	614-240-3	21	60				
NS 8500 T24 S25	614-189-1	24	25	147.3	148.3		
NS 8500 T24 S30	614-189-5	24	30				
NS 8500 T24 S35	614-189-4	24	35				
NS 8500 T25 S25	614-193-1	25	25	153.4	154.7		
NS 8500 T25 S30	614-193-6	25	30				
NS 8500 T25 S35	614-193-5	25	35				
Classic Sprockets							
Round Bores							
KU 8500 T24 R30	114-3046-8	24	30	147.3	148.3	35	
KU 8500 T25 R50	114-3266-2	25	50	153.4	154.7		
Square Bores							
KU 8500 T17 S40	114-3215-2	17	40	104.7	105.4	35	
KU 8500 T25 S40	114-3216-2	25	40	153.4	154.7		