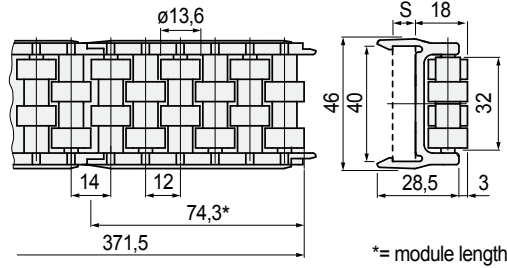


Part. **S0580**



Sideflexing

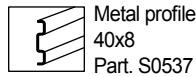
■ Roller side guide



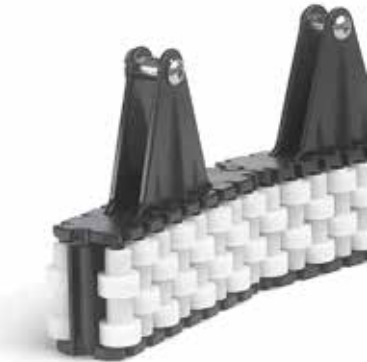
\*= module length

Version	S mm	Code	Weight kg/m
For 40x8 plate	8	<b>603302</b>	0,61
For 40x10 plate	10	<b>611772</b>	

- Material: frame in Acetal POM (black), rollers in Acetal POM (white).
- Standard packaging: strands of 0,371 metres (5 modules).
- Packaging: 4,5 metres (12 strands).
- Accessories:

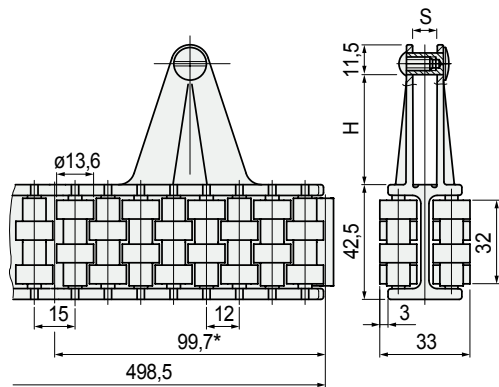


Part. **S0557**



Sideflexing

■ Centre roller guide



\*= module length

Version	H mm	S mm	Code	Weight kg/m
For 30x6 plate	30	6	<b>695501N</b>	1,22
For 40x8 plate	40	8	<b>695991N</b>	

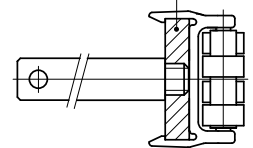
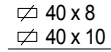
- Can be used in combination with Part. S0580.
- Material: frame in Acetal POM (black), rollers in Acetal POM (white).
- Min. curvature radius: 335 mm.
- Standard packaging: strands of 0,498 metres (5 modules).
- Packaging: 4,5 metres (9 strands).
- Accessories:



• Fixing of Part. S0580

Snap-on assembly / disassembly

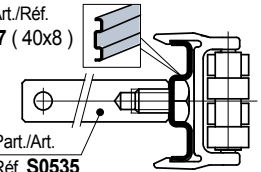
- Fixing with plate.



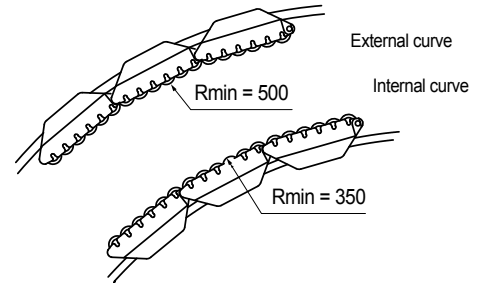
- Fixing with metal profile Part. S0537.

Part./Art./Réf. **S0537 (40x8)**

Part./Art. Réf. **S0535**



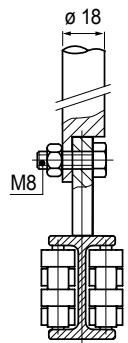
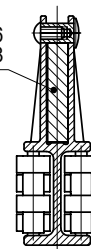
• Min. curvature radius Part. S0580



• Fixing of Part. S0557

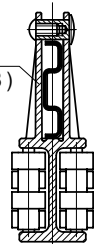
Assembly / disassembly.

- Fixing with plate.



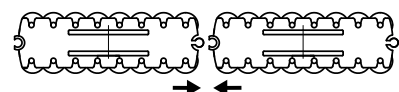
- Fixing with metal profile Part. S0537.

Part./Art./Réf. **S0537 (40x8)**



• Modular system Part. S0580 - S0557

The guide consists of modules with snap-on assembly.



● Best Seller

● Standard

● On request: minimum quantity may apply. Consult our Customer Service for availability.

Item code for order = Part. + Code