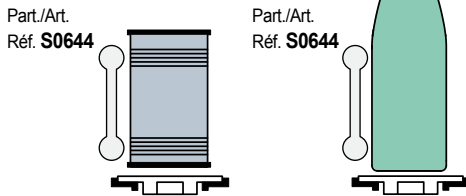
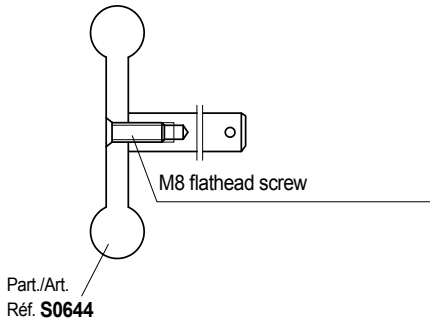


• Use of Part. S0644

Medium strength containers (ex: latten, glass).

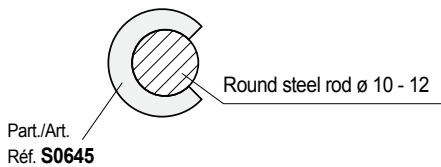


• Fixing of Part. S0644



• Use of Part. S0645

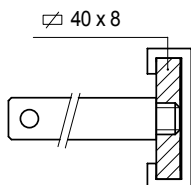
Protection of round steel rods



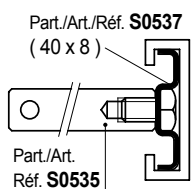
• Fixing of Part. S0539

Assembly / disassembly

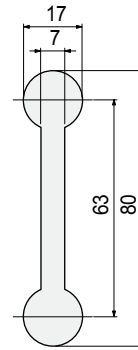
- Fixing with plate.



- Fixing with metal profile Part. S0537.



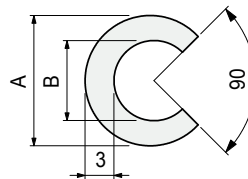
■ Guide rail



Material	Length metres	Code
UHMWPE		
Black	3	652322
Green	3	652332

- Linear expansion coefficient: $2 \times 10^{-4} \text{ } ^\circ\text{C}^{-1}$. Calculation of thermal expansion see Technical information.
- Packaging: 36 metres.

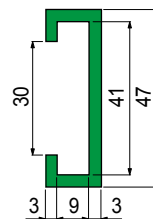
■ Profile for round steel rods



Material	Use	A mm	B mm	Code
UHMWPE				
White	for rod ø 10	14	9	652342
	for rod ø 12	17	11	652352

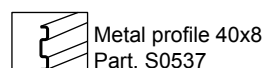
- Linear expansion coefficient: $2 \times 10^{-4} \text{ } ^\circ\text{C}^{-1}$.
- Standard packaging: coil.
- Packaging: 50 metres.

■ Guide rail (extra flat)



Material	Length metres	Code	Weight kg/m
Black	3	689301	0,23
	6	689321	
Green	3	689291	
	6	689311	

- Material: Polyethylene PE 500.000.
- Linear expansion coefficient: $2,5 \times 10^{-4} \text{ } ^\circ\text{C}^{-1}$. Calculation of thermal expansion see Technical information.
- Packaging: 48 metres (in 3 m length). 96 metres (in 6 m length).
- Accessories:



Part. S0644



Part. S0645



Part. S0539



● Best Seller

● Standard

● On request: minimum quantity may apply. Consult our Customer Service for availability.

Item code for order = Part. + Code