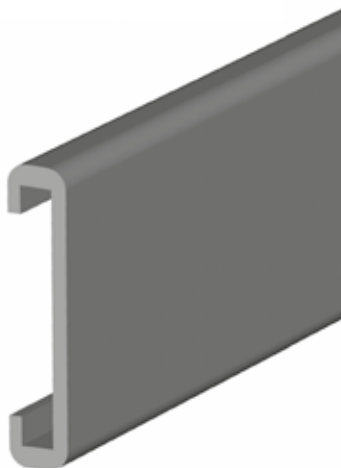
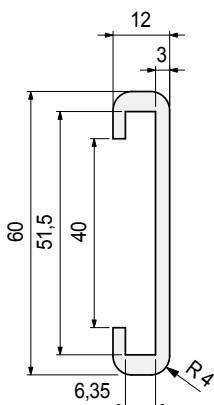


Part. **S0642**



■ Guide rail (extra flat)



| Material | Length metres | Code |
|----------|---------------|---------------|
| UHMWPE | | |
| Black | 3 | 652292 |

- Linear expansion coefficient: $2 \times 10^{-4} \text{ } ^\circ\text{C}^{-1}$. Calculation of thermal expansion see Technical information.
- Packaging: 36 metres.
- Accessories:

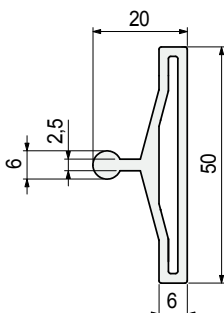


Metal profile
Part. S0643.

Part. **S0643**



■ Metal profile



| Metal profile material | Length metres | Code |
|------------------------|---------------|---------------|
| Anodized aluminium | 3 | 652302 |
| | 6 | 652312 |

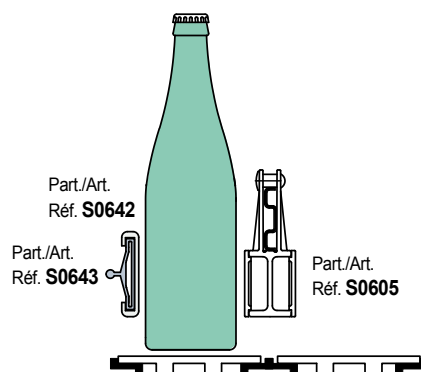
- Can be used in combination with Part. S0642.
- Packaging: 36 metres.
- Accessories:



Guide - Rail
Clamps.

• Use of Part. S0642 - S0643

Rugged containers with delicate surface (for example decorated glass bottles). Can be used in combination with Part. S0605.



● Best Seller

● Standard

● On request: minimum quantity may apply. Consult our Customer Service for availability.

Item code for order = Part. + Code