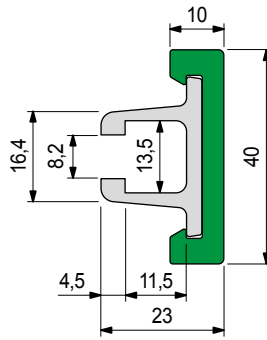


Part. **S0422**



■ Guide rail (extra flat)



Metal profile material	Length metres	Code	Weight kg/m
Austenitic stainless steel	3	65248M	0,70
	6	65258M	

- Use: rugged containers.
- Material: plastic profile in polyethylene UHMWPE (green).
- State of supply: the plastic and metal profiles are supplied assembled.
- Plastic Profile spare part. (green): S088568309 (6 metres).
- Plastic Profile spare part. (ULF): S0885648423 (6 metres).
- Metal Profile in Anodized aluminium spare part: S0884608662 (3 metres).
- Min. curvature radius: 280 mm.
- Packaging: 24 metres.
- Accessories:

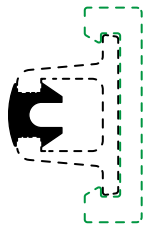


Guide rail bending machine (manual)
Part. S0218.

Part. **S0370**



■ Sealing profile



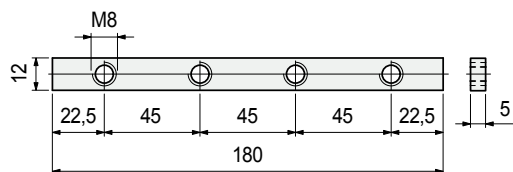
Material	Packaging metres	Code
Rubber EPDM 80 (black)	20	61036

- Use: when applied to the metal profile, this product improves guide cleanliness.
- Standard packaging: coil.

Part. **S0369**



■ Connecting bar

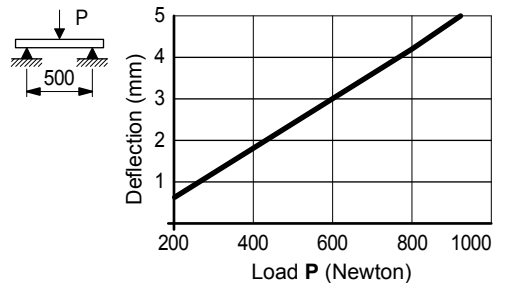


Material	Code	Weight kg/m
Zinc plated steel	69995	0,10

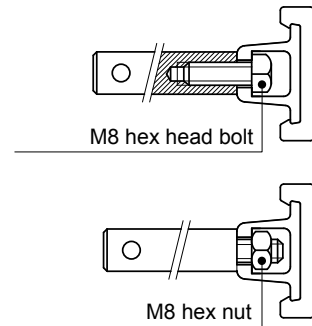
- Packaging: 8 pieces.

- **Material:** Polyethylene UHMWPE with molecular density 5.600.000 g/mol.
Characteristics: new material Polyethylene ULF brown red (UHMWPE): reduced friction coefficient, higher wear resistance.
- **Linear expansion coefficient:** $2 \times 10^{-4} \text{ } ^\circ\text{C}^{-1}$
Calculation of thermal expansion see Technical information.
- **Operating temperature Green Black:**
In air (- 40 to + 80 °C).
In hot water (+ 70 °C).
- **Operating temperature ULF - brown red:**
In air (- 40 to + 45 °C).
In hot water (+ 45 °C).
- **Polyethylene ULF is FDA approved**
Polyethylene ULF complies with the Code of Federal Regulations Title 21, § 177.1520 "Olefin Polymers" of the Food and Drug Administration (FDA) of April 1, 2008.
- **Position of guides.** See Technical information.

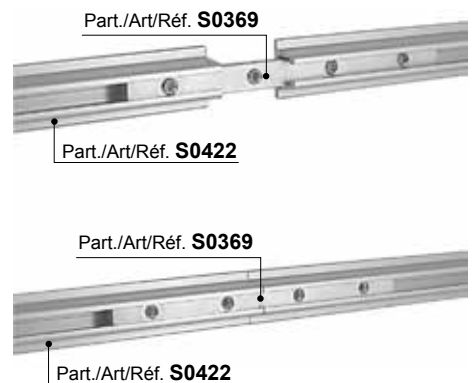
• Deflection



• Fixing of Part. S0422



- **Assembly of Part. S0369**
Insert the guides and tighten the set screws.



● Best Seller

● Standard

● On request: minimum quantity may apply. Consult our Customer Service for availability.

Item code for order = Part. + Code