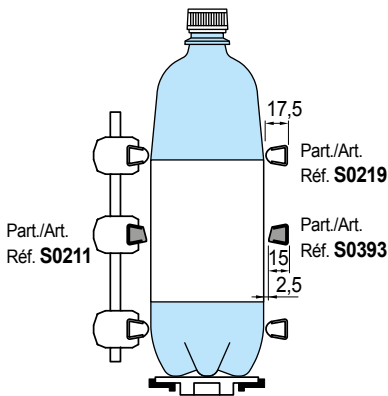


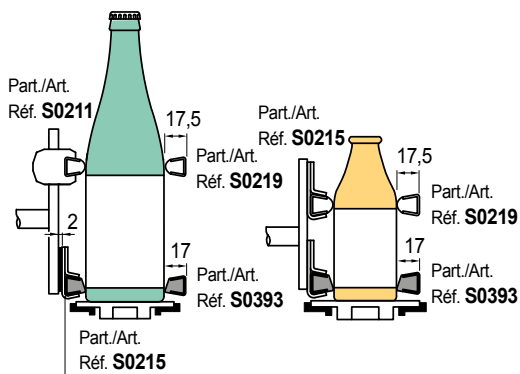
- **Material:** Polyethylene UHMWPE with molecular density 5.600.000 g/mol.
Characteristics: new material Polyethylene ULF brown red (UHMWPE): reduced friction coefficient, higher wear resistance.
- **Operating temperature White, Green, Black:**
In air (- 40 to + 80 °C).
In hot water (+ 70 °C).
- **Operating temperature ULF - brown red:**
In air (- 40 to + 45 °C).
In hot water (+ 45 °C).
- **Polyethylene ULF is FDA approved**
Polyethylene ULF complies with the Code of Federal Regulations Title 21, § 177.1520 "Olefin Polymers" of the Food and Drug Administration (FDA) of April 1, 2008.

• **Use of Part. S0393**

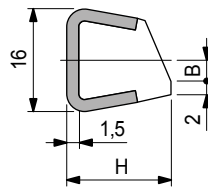
Transport of PET bottles with petaloid bottom.
The guide can be used to stabilize, and protect label from damage.



Transport of glass bottles.



■ **Label protection guide**



H	B
mm	mm
15	3,9
17	3,6

Metal profile material	Length metres	H mm	Code	Weight kg/m
Austenitic stainless steel	3	15	62522	0,50
		17	62512	

- Plastic profile material: polyethylene UHMWPE (white).
Antistatic polyethylene UHMWPE (black) available upon request with minimum quantities.
- Min. curvature radius: 145 mm.
- Linear expansion coefficient: $4 \times 10^{-5} \text{ } ^\circ\text{C}^{-1}$.
Calculation of thermal expansion see Technical information.
- Packaging: 24 metres.
- Accessories:

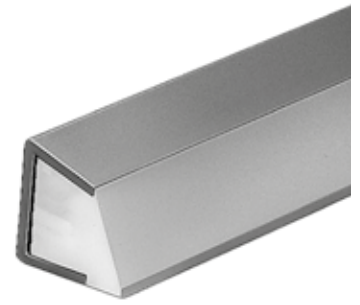


Guide - Rail Clamps.

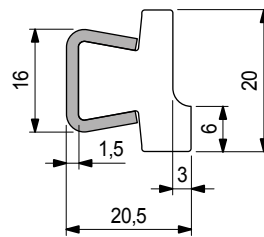


Guide rail bending machine (manual)
Part. S0218.

Part. S0393



■ **Label protection guide**



Metal profile material	Length metres	H mm	Code	Weight kg/m
Austenitic stainless steel	3	15	614673	0,65
		17	611092	

- Use: unstable containers.
Beer bottles (0,33 l), water bottles (1/2 l).
- Plastic profile material: polyethylene UHMWPE (white).
- Min. curvature radius: 160 mm.
- Linear expansion coefficient: $4 \times 10^{-5} \text{ } ^\circ\text{C}^{-1}$.
Calculation of thermal expansion see Technical information.
- Packaging: 48 metres.
- Accessories:



Guide - Rail Clamps.



Guide rail bending machine (manual)
Part. S0218.

Part. S0596



● **Best Seller**

● **Standard**

● **On request:** minimum quantity may apply.
Consult our Customer Service for availability.

Item code for order = Part. + Code