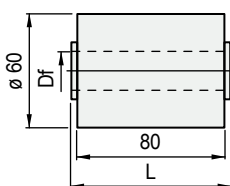


Part. S0758



Dia. 60 mm

Double roller



	shaft dia.		Bore dia. Df mm	Code	
	mm	inch		L = 82	L = 84,5
Version UNL™					
15	-		15,5	608533	608553
18	-		18,5	608183	608563
19,05	3/4		19,5	612913	613563
20	-		20,5	608543	608573
Version PE (Black)					
14	-		14,5	634033	634053
15	-		15,5	620683	620723
16	-		16,5	634043	634063
18	-		18,5	620693	620733
19,05	3/4		19,5	620703	620743
20	-		20,5	620713	620343

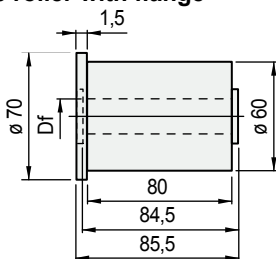
- Characteristics: completely closed design.
- Version in UNL™ low noise material.
- Colour: UNL™ (aubergine), polyethylene PE (black).
- Packaging: 100 pieces.

Part. S0778



Dia. 60 mm

Double roller with flange



Material	shaft dia.		Bore dia. Df mm	Code	
	mm	inch		S = 2	S = 1
UNL™	15	-	15,5	613483	-
	18	-	18,5	613473	-
	19,05	3/4	19,5	613573	-
	20	-	20,5	613463	-
Polyethylene PE	14	-	14,5	634433	-
	15	-	15,5	620753	-
	16	-	16,5	634443	-
	18	-	18,5	620763	-
	19,05	3/4	19,5	620773	-
	20	-	20,5	620373	-

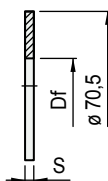
- Characteristics: completely closed design.
- Version in UNL™ low noise material.
- Colour: UNL™ (aubergine), polyethylene PE (black).
- Packaging: 100 pieces.

Part. S0555

For Part. S0554
Part. S0613
Part. S0758



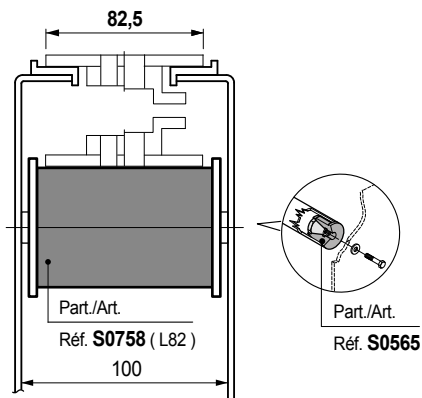
Guide flange



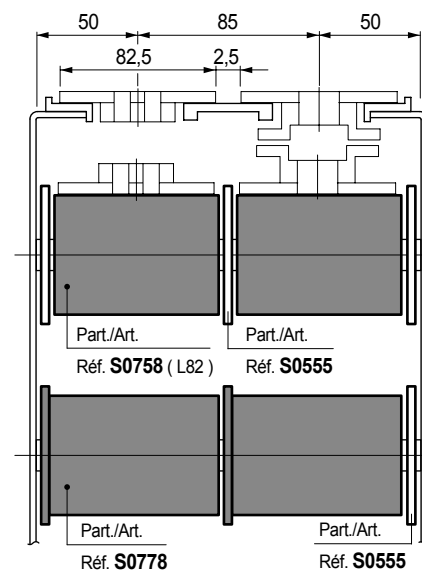
Shaft dia.	Bore dia. Df mm		Code	
	mm	inch	S = 2	S = 1
15	-	15,2	695181	-
16	-	16,2	695191	-
18	-	18,2	695201	630693
20	3/4	20,2	695211	630703

- Material: Polyethylene PE (black).
- Packaging: 100 pieces.

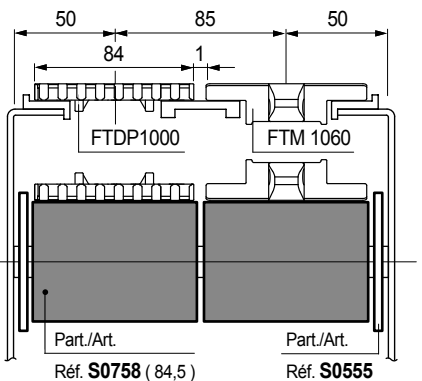
Chain width 82,5 mm (K 325)



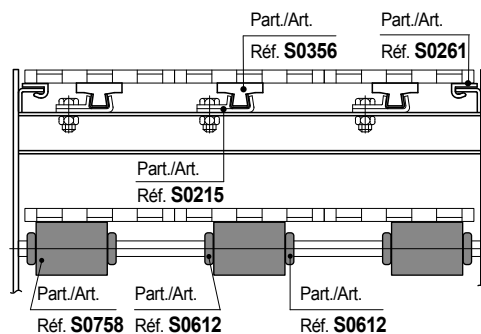
Chain width 82,5 mm (K 325) / Pitch 85 mm



Chain width 84 mm (K 325) / Pitch 85 mm



MatTop® modular chains



Best Seller

Standard

On request: minimum quantity may apply. Consult our Customer Service for availability.

Item code for order = Part. + Code