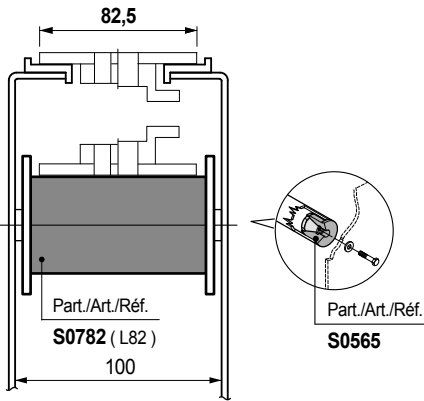
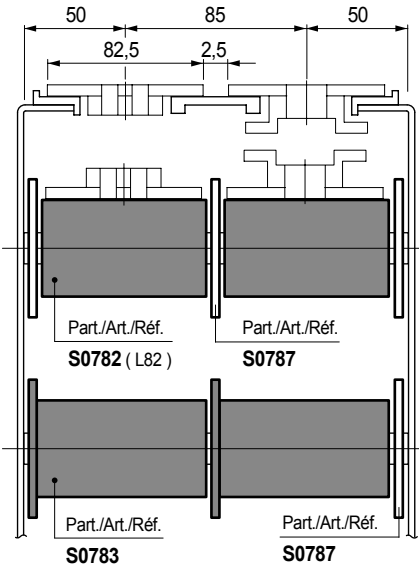


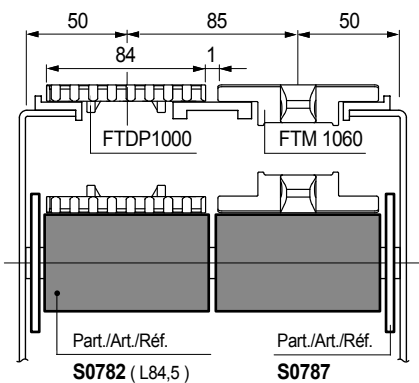
Chain width 82,5 mm (K325)



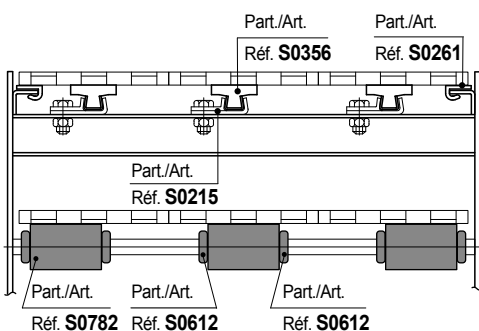
Chain width 82,5 mm (K325) / Pitch 85 mm



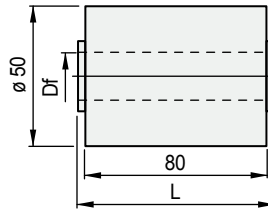
Chain width 84 mm pitch 85 mm



MatTop® modular chains



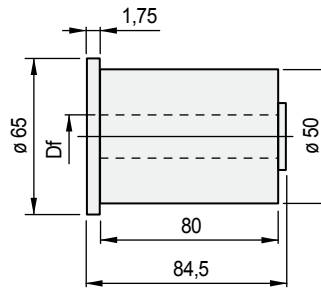
Double roller



shaft dia. mm	inch	Bore dia. Df mm	Code	
			L = 82	L = 84,5
Version UNL™				
18	-	18,5	613953	613983
20	3/4	20,5	613963	613993
Version PE (Black)				
18	-	18,5	620603	620623
20	3/4	20,5	620613	620633

- Characteristics: completely closed design.
- Version in UNL™ low noise material.
- Colour: UNL™ (aubergine), polyethylene PE (black).
- Packaging: 100 pieces.

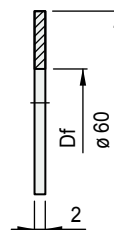
Double roller with flange



Material	shaft dia.		Bore dia. Df mm	Code
	mm	inch		
UNL™	18	-	18,5	614013
	20	3/4	20,5	614023
Polyethylene PE	18	-	18,5	620643
	20	3/4	20,5	620653

- Characteristics: completely closed design.
- Version in UNL™ low noise material.
- Colour: UNL™ (aubergine), polyethylene PE (black).
- Packaging: 100 pieces.

Guide flange



Material	shaft dia.		Bore dia. Df mm	Code
	mm	inch		
Polyethylene	18	-	18,2	614713
PE (aubergine)	20	3/4	20,2	614723
Polyethylene	18	-	18,2	620663
PE (black)	20	3/4	20,2	620673

- Assembly: to be applied to roller Part. S0782.
- Packaging: 100 pieces.

Part. S0782



Dia. 50 mm

Part. S0783



Dia. 50 mm

Part. S0787



For Part. S0782

● Best Seller

● Standard

● On request: minimum quantity may apply. Consult our Customer Service for availability.

Item code for order = Part. + Code