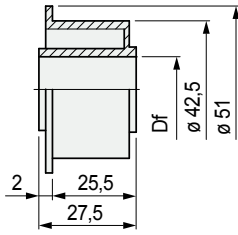


Part. S0073



Dia. 42,5 mm

Roller



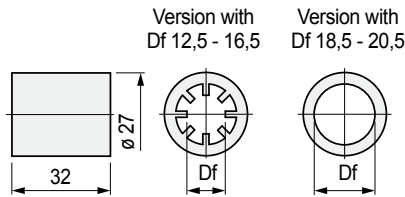
| Shaft dia. mm | Bore dia. Df mm | Code |
|---------------|-----------------|-------|
| 12 | 12,5 | 50660 |
| 16 | 16,5 | 62946 |
| 18 | 18,5 | 50670 |
| 20 | 20,5 | 50680 |

- Material: polyethylene PE (black).
- Packaging: 100 pieces.

Part. S0126



Separator



| Shaft dia. mm | Bore dia. Df mm | Code |
|---------------|-----------------|-------|
| 12 | 12,5 | 65396 |
| 16 | 16,5 | 65406 |
| 18 | 18,5 | 65416 |
| 20 | 20,5 | 62520 |

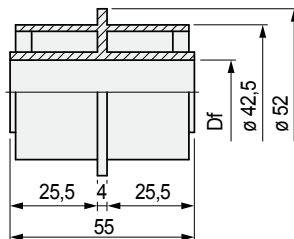
- Material: polyethylene PE (black).
- Packaging: 100 pieces.

Part. S0125



Dia. 42,5 mm

Double roller L55

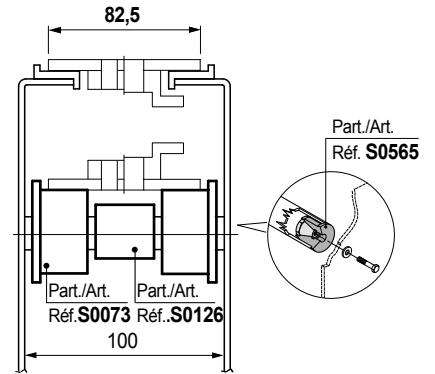


| Shaft dia. mm | Bore dia. Df mm | Code |
|---------------|-----------------|-------|
| 12 | 12,5 | 62956 |
| 16 | 16,5 | 62966 |
| 18 | 18,5 | 62976 |
| 20 | 20,5 | 62510 |

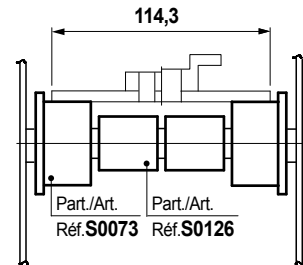
- Material: polyethylene PE (black).
- Packaging: 100 pieces.

TableTop® chains/PlateTop chains

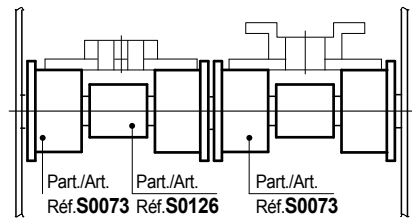
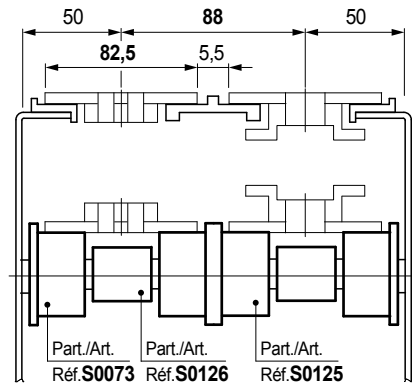
Chain width 82,5 mm (K 325)



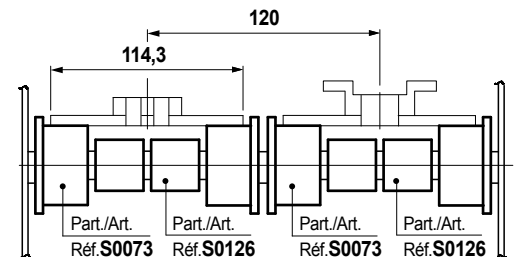
Chain width 114,3 mm (K 450)



Chain width 82,5 mm (K 325) / Pitch 88 mm



Chain width 114,3 mm (K 450) / Pitch 120 mm



Best Seller

Standard

On request: minimum quantity may apply. Consult our Customer Service for availability.

Item code for order = Part. + Code