

• **Material:** Polyethylene UHMWPE with molecular density 5.600.000 g/mol.

Characteristics: new material Polyethylene ULF™ brown red (UHMWPE): reduced friction coefficient, higher wear resistance.

• **Operating temperature White:**

In air (- 40 to + 80 °C).

In hot water (+ 70 °C).

• **Operating temperature ULF™ brown red:**

In air (- 40 to + 45 °C).

In hot water (+ 45 °C).

• **Polyethylene ULF™ is FDA approved**

Polyethylene ULF™ complies with the Code of Federal Regulations Title 21, § 177.1520 "Olefin Polymers" of the Food and Drug Administration (FDA) of April 1, 2008.

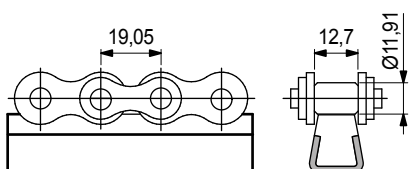
• **Coefficient of friction between chain POM and wearstrip ULF™:** 0,08.

Note: for calculation of chain pull refer to Technical Support.

• **Position of guides.** See Technical information.

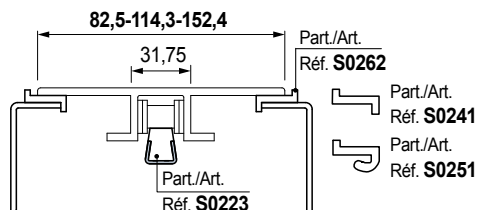
• **Use of Part. S0223**

ANSI 60 American series roller chain (pitch 19,05 mm, roller Dia. 11,91 mm, internal width 12,7 mm).

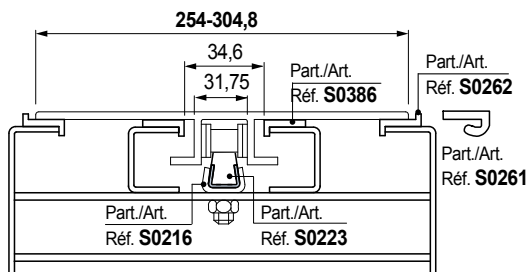


• **PlateTop chain series 1874 - 4874 - 1873**

Chain width 82,5 mm (K325), 114,3 mm (K450), 152,4 mm (K600)

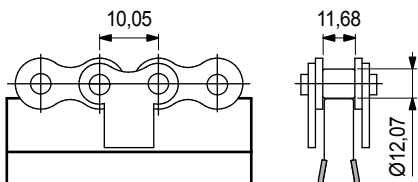


Chain width 254 mm (K1000), 304,8 mm (K1200)

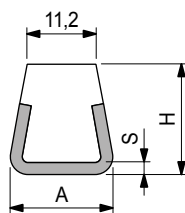


• **Use of Part. S0274**

ISO 12 B1 European series roller chains with straight connections (pitch 10,05 mm, roller Dia. 12,07 mm, internal width 11,68 mm).



Chain - guide profile



S	H	A
mm	mm	mm
1,5	17,5	16
2	18	17

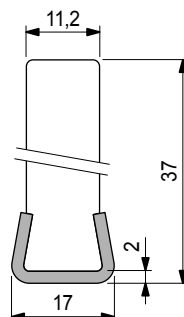
Thickness S mm	Metal profile material	Length metres	Code	Weight kg/m
1,5	Austenitic stainless steel	3	61031	0,54
		6	69402	
2	Austenitic stainless steel	3	61743	
		6	67123	
Zinc plated steel		3	63971	

- Colour: white.
- Linear expansion coefficient: $4 \times 10^{-5} \text{ } ^\circ\text{C}^{-1}$.
- Calculation of thermal expansion see Technical information.
- Packaging: 24 metres (in 3 m length).
48 metres (in 6 m length).

Part. S0223



Chain - guide profile



Colour	Length metres	Code	Weight kg/m
White	3	66801	0,79

- Material: metal profile austenitic stainless steel.
- Linear expansion coefficient: $4 \times 10^{-5} \text{ } ^\circ\text{C}^{-1}$.
- Calculation of thermal expansion see Technical information.
- Packaging: 24 metres.

Part. S0274



- Best Seller
- Standard
- On request: minimum quantity may apply. Consult our Customer Service for availability.

Item code for order = Part. + Code