

• **Material:** Polyethylene UHMWPE with molecular density 5.600.000 g/mol.

Characteristics: new material Polyethylene ULF™ brown red (UHMWPE): reduced friction coefficient, higher wear resistance.

• **Operating temperature White:**

In air (- 40 to + 80 °C).

In hot water (+ 70 °C).

• **Operating temperature ULF™ brown red:**

In air (- 40 to + 45 °C).

In hot water (+ 45 °C).

• **Polyethylene ULF™ is FDA approved**

Polyethylene ULF™ complies with the Code of Federal Regulations Title 21, § 177.1520 "Olefin Polymers" of the Food and Drug Administration (FDA) of April 1, 2008.

• **Coefficient of friction between chain POM and wearstrip ULF™:** 0,08.

Note: for calculation of chain pull refer to Technical Support.

• **Position of guides.** See Technical information.

• **Head joint**

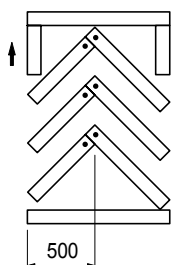
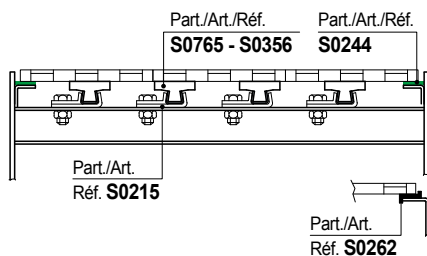
Head joint shall be made with a 45° cut to avoid steps and guarantee chain smooth movement.

With temperature increase it is necessary to leave a gap wide enough to allow for thermal elongation of plastic parts.

• **MatTop® modular chain**

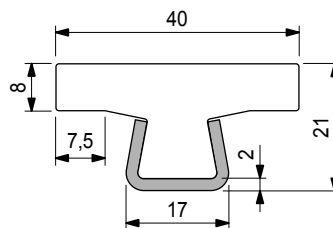
Parallel wear strip.

Recommended with medium-light loads.



CHEVRON pattern.
Recommended with high loads (accumulation tables)
Chain wear is evenly distributed throughout the width.

Chain - guide profile



Colour	Length metres	Code	Weight kg/m
White	3	61605	0,89
	6	61615	

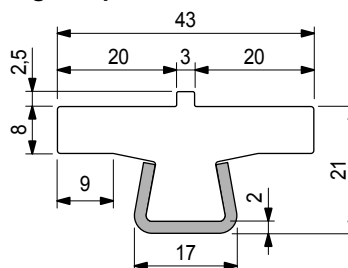
- Material: metal profile austenitic stainless steel.

- Linear expansion coefficient: $4 \times 10^{-5} \text{ } ^\circ\text{C}^{-1}$.

- Calculation of thermal expansion see Technical information.

- Packaging: 24 metres.

Chain - guide profile



Colour	Length metres	Code	Weight kg/m
White	3	65612	0,95
	6	69412	

- Material: metal profile austenitic stainless steel.

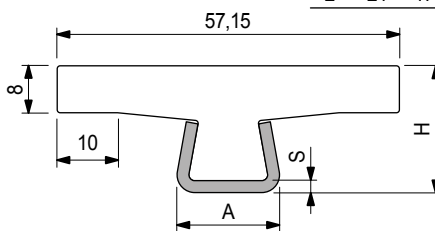
- Linear expansion coefficient: $4 \times 10^{-5} \text{ } ^\circ\text{C}^{-1}$.

- Calculation of thermal expansion see Technical information.

- Packaging: 24 metres.

Chain - guide profile

S	H	A
mm	mm	mm
1,5	20,5	16
2	21	17



Thickness S mm	Metal profile material	Length metres	Code	Weight kg/m
1,5	Austenitic stainless steel	3	608943N	0,95
	Zinc plated steel	6	608953N	
	Zinc plated steel	3	608963N	
2	Austenitic stainless steel	3	608973N	1,06
	Austenitic stainless steel	6	608983N	

- Colour: white.

- Min. curvature radius: 200 mm.

- Linear expansion coefficient: $4 \times 10^{-5} \text{ } ^\circ\text{C}^{-1}$.

- Calculation of thermal expansion see Technical information.

- Packaging: 24 metres.

Part. S0356



Part. S0310



Part. S0765



● Best Seller

● Standard

● On request: minimum quantity may apply. Consult our Customer Service for availability.

Item code for order = Part. + Code