

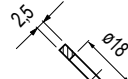
Use

Contact lever ideal to mechanically check the presence of products. Works in conjunction with photocells or magnetic sensor (proximity sensor).

Versions

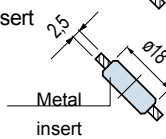
The control contact lever is supplied in three versions according to the type of sensor to be used.

1) With hole (no insert).



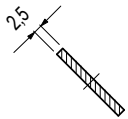
Sez A-A

2) With hole and metal insert (for magnetic sensor).



Sez A-A

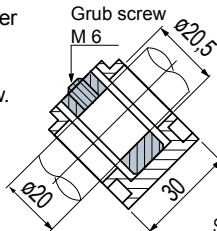
3) Without hole



Sez A-A

Assembly on the shaft.

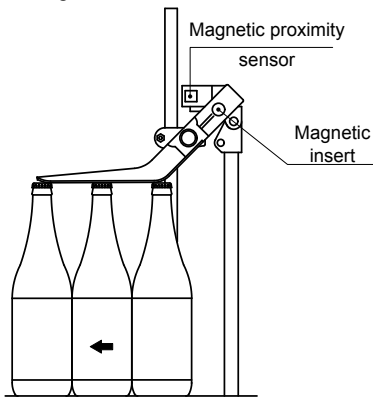
The control contact lever can be axially fixed on the shaft with a metal collar and a grub screw.



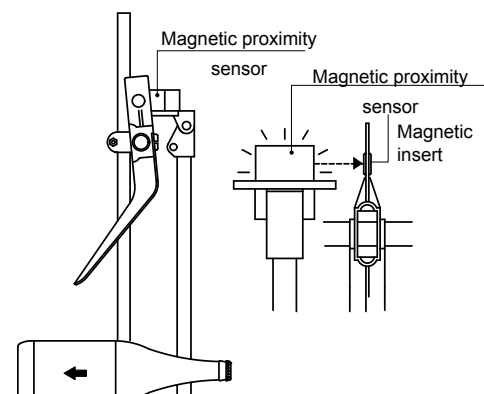
Sez B-B

Assembly of Part. S0518 (with insert for magnetic sensor)

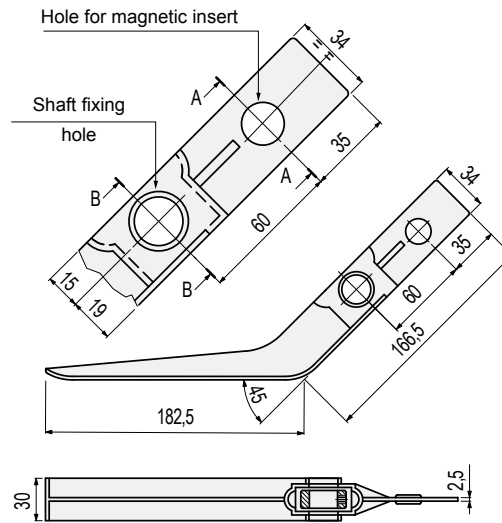
In regular conditions the control contact lever is high and magnetic proximity sensor does not detect the presence of magnetic insert.



In case of problem (example bottle downing) the control contact lever lowers and magnetic sensor detects the presence of magnetic insert and stops the conveyor.



Control contact lever



Version	Code	Weight kg
With hole (no insert)	642941N	
With hole and metal insert	642951N	0,1
Without hole	696021N	

- Material: lever in polypropylene (black), insert (for magnetic sensor) in ferritic stainless steel, locking spacer (for shaft fixing) in zinc plated steel.
- Packaging: 50 pieces.

Best Seller

Standard

On request: minimum quantity may apply. Consult our Customer Service for availability.

Item code for order = Part. + Code