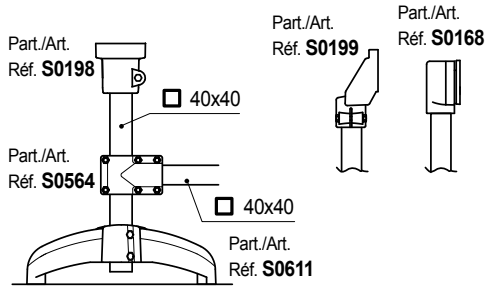
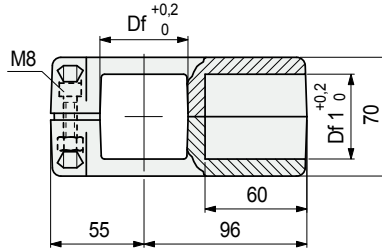
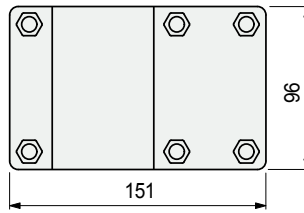


• Assembly of Part. S0564

Example of assembly with vertical tubes \varnothing 40 mm



■ Connecting Joints



Tube dimensions mm	Bore Df mm	Bore Df1 mm	Code
\varnothing 38 x 38	\varnothing 38	\varnothing 38	698531
\varnothing 40 x 40	\varnothing 40	\varnothing 40	698541
\varnothing 45 x 45	\varnothing 45	\varnothing 45	607112
\varnothing 50 x 50	\varnothing 50	\varnothing 50	698551

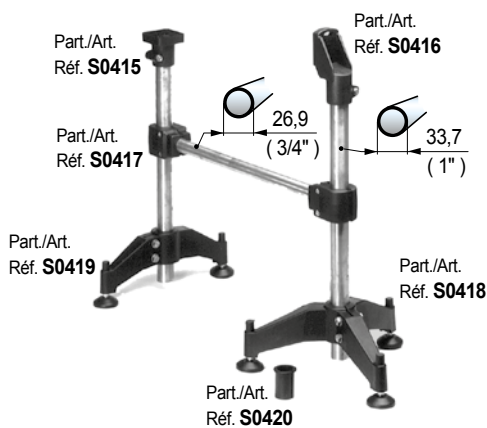
- Material: joint in reinforced polyamide PA FV (black). Tightening screws in austenitic stainless steel, nuts in nickel plated brass.
- Weight: 0,5 Kg.
- Max recommended tightening torque: 1,5 Kgm.
- Packaging: 8 pieces.

Part. S0564

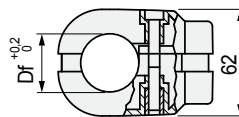
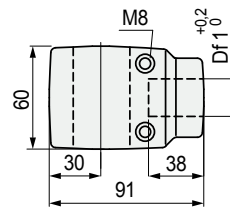


For square tubes

• Assembly of Part. S0417



■ Connecting Joints



Vertical tube dia. mm	Horizontal tube dia. mm	Bore dia. Df mm	Bore dia. Df1 mm	Code
\varnothing 33,7 (1")	\varnothing 26,9 (3/4")	33,7	26,9	69368

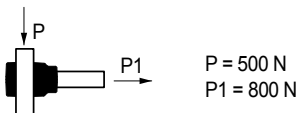
- Material: joint in reinforced polyamide PA FV (black). Tightening screws in austenitic stainless steel, tightening bushes in nickel plated brass.
- Weight: 0,21 Kg.
- Max recommended tightening torque: 2 Kgm.
- Packaging: 24 pieces.

Part. S0417



For round tubes

• Sliding load resistance



Tests performed at tightening torque: 2 Kgm

- Best Seller
- Standard
- On request: minimum quantity may apply. Consult our Customer Service for availability.

Item code for order = Part. + Code