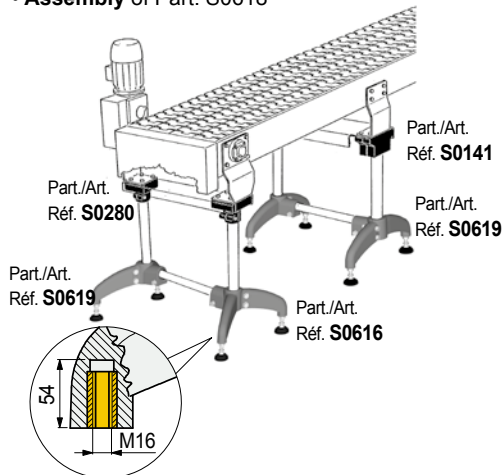
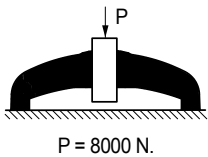


• Assembly of Part. S0618

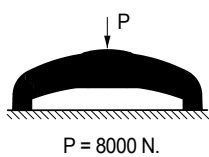


Detail of the insert for the levels.

• Sliding load

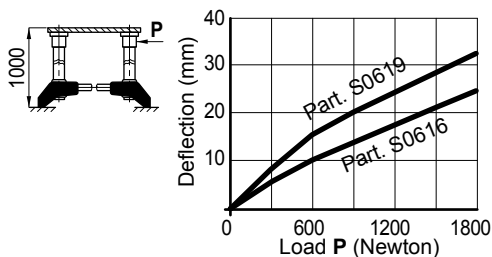


• Max applicable load



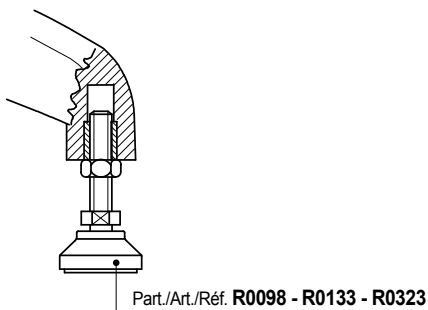
• Deflection

Part. S0616 offers a better rigidity than Part. S0619

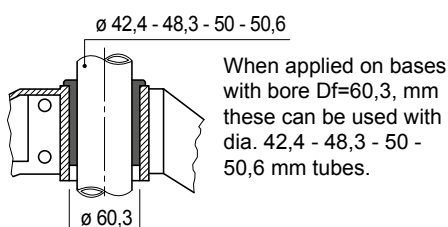


Tests performed at tightening torque: 3,6 Kgm

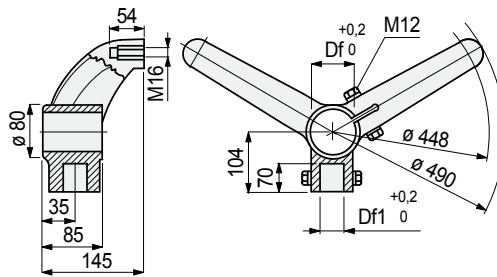
• Types of levels that can be used



• Assembly of Part. S0124



■ Support base (bipod)



Vertical tube dia. mm	Horizontal tube dia. mm	Bore dia. Df mm	Bore dia. Df1 mm	Code
-----------------------	-------------------------	-----------------	------------------	------

Bolts in austenitic stainless steel

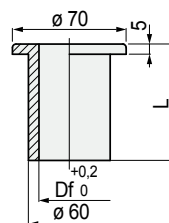
42,4 (1 ^{3/4})	42,4 (1 ^{3/4})	42,4	42,4	624472
48,3 (1 ^{1/2})	42,4 (1 ^{3/4})	48,3	42,4	624492
48,3 (1 ^{1/2})	48,3 (1 ^{1/2})	48,3	48,3	611203
50,8	42,4 (1 ^{3/4})	50,8	42,4	624522
60,3 (2")	42,4 (1 ^{3/4})	60,3	42,4	624552

Bolts in zinc plated steel

42,4 (1 ^{3/4})	42,4 (1 ^{3/4})	42,4	42,4	638882
48,3 (1 ^{1/2})	42,4 (1 ^{3/4})	48,3	42,4	638892
48,3 (1 ^{1/2})	48,3 (1 ^{1/2})	48,3	48,3	611213
50,8	42,4 (1 ^{3/4})	50,8	42,4	638902
60,3 (2")	42,4 (1 ^{3/4})	60,3	42,4	638912

- Material: support base in reinforced polyamide PA FV (black), brass threaded bushings.
- Weight: 1,05 Kg.
- Max recommended tightening torque: 3,6 Kgm.
- Packaging: 12 pieces.

■ Reduction bushing



Tube dia. mm	Bore dia. Df mm	L mm	Code	Weight kg
42,4 (1 ^{3/4})	42,4	85	61980	0,10
48,3 (1 ^{1/2})	48,3	50	692711	
		85	61970	
50	50	85	51361	0,10
50,6	50,6	85	61770	

- Material: polyamide PA (black).
- Packaging: 10 pieces.

Part. S0616



For round tubes

Part. S0124



● Best Seller

● Standard

● On request: minimum quantity may apply. Consult our Customer Service for availability.

Item code for order = Part. + Code