

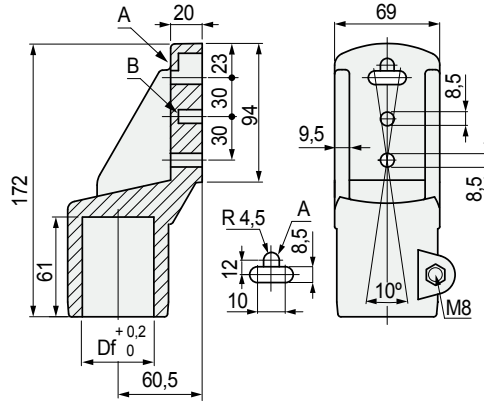
Part. S0199



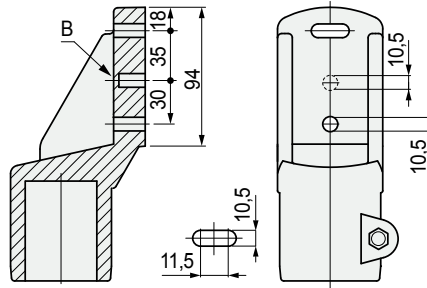
For round and square tubes

Side mounting top bracket

Version with fixing holes for M8



Version with fixing holes for M10



Tube dimensions mm	Bore Df mm	Bolts material	Code
--------------------	------------	----------------	------

Version with fixing holes for M8

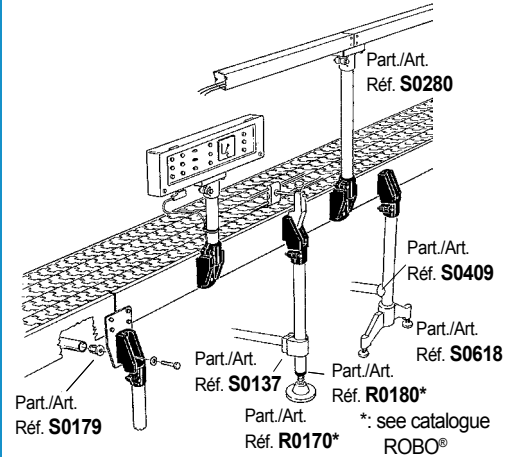
Ø48,3 (1 1/2)	Ø48,3	Austenitic stainless steel	59171
Ø50,8	Ø50,8	Austenitic stainless steel	664771
Ø38x38	Ø38	Austenitic stainless steel	611622
		Zinc plated steel	611712
Ø40x40	Ø40	Austenitic stainless steel	611632
		Zinc plated steel	611722

Version with fixing holes for M10

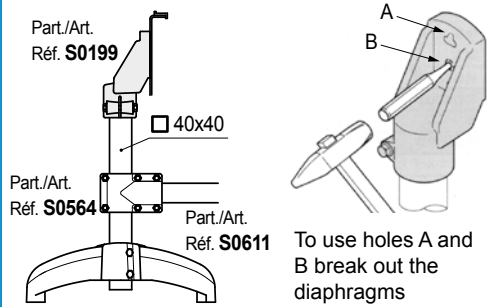
Ø48,3 (1 1/2)	Ø48,3	Austenitic stainless steel	61683
---------------	-------	----------------------------	-------

- Material: reinforced polyamide PA FV (black).
- Weight: 0,32 Kg.
- Max recommended tightening torque: 2 Kgm.
- Packaging: 24 pieces.

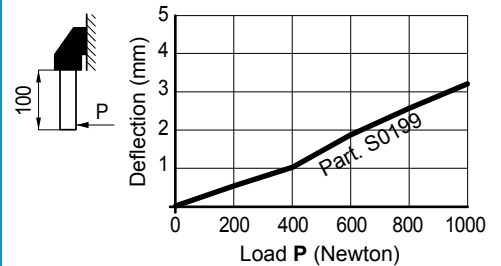
Assembly of Part. S0199 (with round tubes)



Assembly of Part. S0199 (with square tubes)



Deflection of Part. S0199



Sliding load



Breaking load



Part. S0199- Ø 48,3 (P = 3600 N)	Part. S0199 (P = 35900 N)
Part. S0199- Ø 38 (P = 2600 N)	
Part. S0199- Ø 40 (P = 1900 N)	

Tests performed at tightening torque: 2 Kgm

● Best Seller

● Standard

● On request: minimum quantity may apply. Consult our Customer Service for availability.

Item code for order = Part. + Code