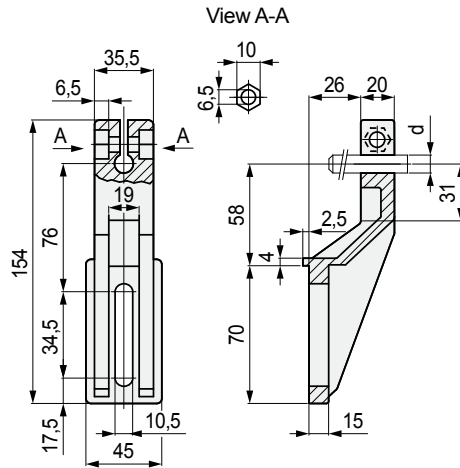


Part. **S0081**

■ Bracket

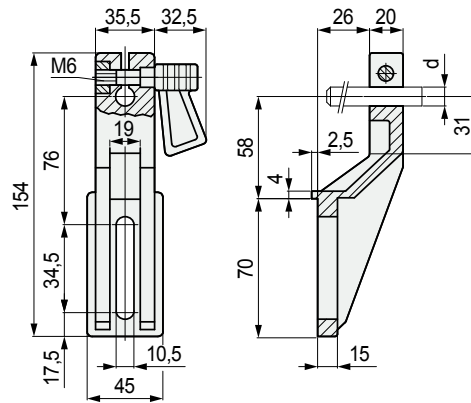


| Material | Pin dia. d mm | Code | Weight kg |
|-------------------------|---------------------|-------|--------------|
| Polyamide PA (black) | 12 | 50770 | 0,11 |
| | 14 | 50780 | |

- Standard packaging: supplied without tightening bolt.
- Tightening bolt required: bolt M6 x 25 UNI 5931, DIN 912. Nut M6 UNI 5587-68.
- Max recommended tightening torque: 0,6 Kgm.
- Packaging: 50 pieces.

Part. **S0088**

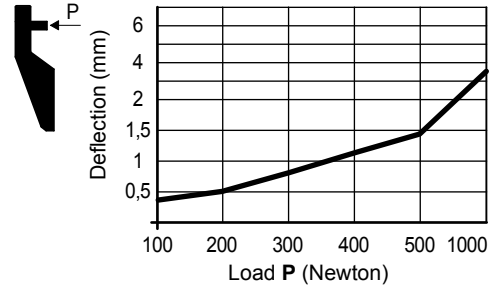
■ Bracket with ratchet handle clamping



| Material | Pin dia. d mm | Code | Weight kg |
|-------------------------|---------------------|-------|--------------|
| Polyamide PA (black) | 12 | 50730 | 0,15 |
| | 14 | 50740 | |

- Ratchet lever material: grip in acetal POM (black), threaded shank in austenitic stainless steel, fixing nut in nickel plated brass.
- Max recommended tightening torque: 0,6 Kgm.
- Packaging: 50 pieces.

• Deflection of Part. S0081 - S0088



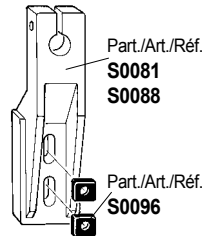
• Technical data Part. S0081 - S0088

- Sliding load resistance: 1020 N (with d = 12)
2000 N (with d = 14)
- Breaking load: 2500 N

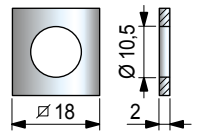
Tests performed at tightening torque: 0,6 Kgm

• Accessories

Square washer Part. S0096. Applicable to Part. S0081 - S0088 distributes force from tightening over larger area.

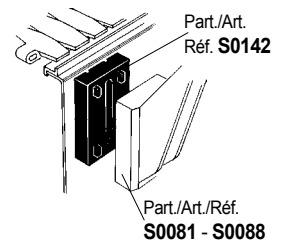


Square washer Part. S009651550. Material: austenitic stainless steel. Packaging: 200 pieces.



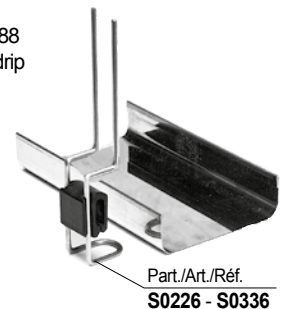
• Accessories

Spacer Part. S0142, Applicable to Part. S0081 - S0088.



• Assembly of drip tray support

Part. S0226 - S0336. Part. S0081 and S0088 permit application of drip tray support.



● Best Seller

● Standard

● On request: minimum quantity may apply. Consult our Customer Service for availability.

Item code for order = Part. + Code