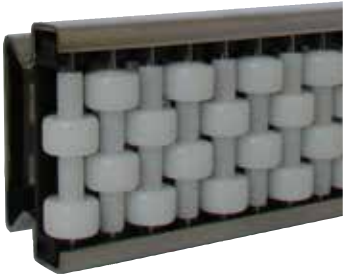
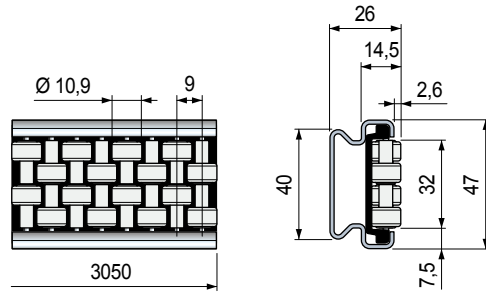


Part. **S0876**



Roller side guides

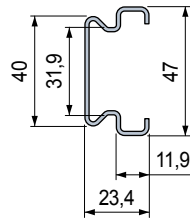


Rollers material	Code	Weight kg
Acetal POM (white)	<b>649393</b>	1,58

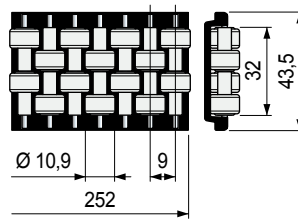
- Material: metal profile in Austenitic stainless steel, rollers module in acetal POM (black), roller pins in stainless steel.
- Standard packaging: strands 3,05 metres.
- Packaging: 2 strands.

The roller side guides can be supplied with separated components.

Metal profile



Roller module



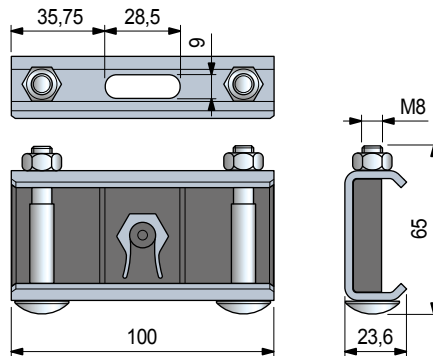
Length mm	Code	Rollers material	Code
3050	<b>649413</b>	Acetal POM (white)	<b>644673</b>

- Material: Austenitic stainless steel.
- Weight: 1,21 Kg/m.
- Packaging: 1 strand.

Part. **S0794**



Side Clamp



Metal Body	Code	Weight kg
Ferritic Stainless Steel	<b>625363</b>	0,28

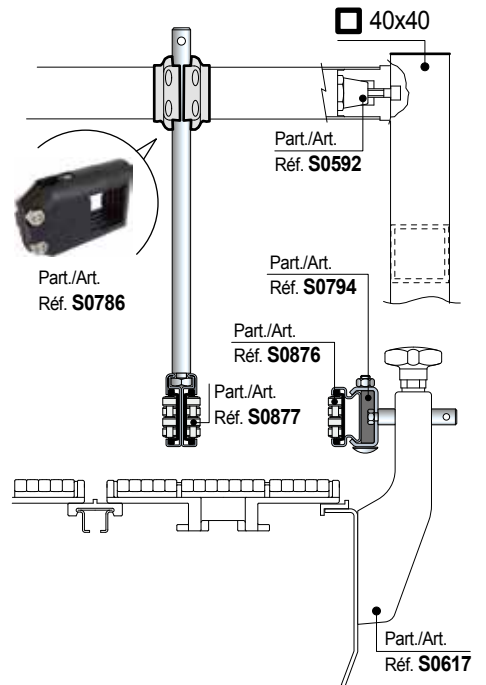
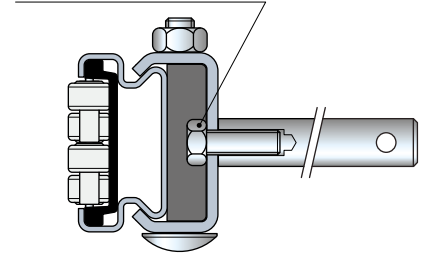
- Plastic Insert Material: POM (Black).
- Hardware: Stainless Steel.
- Packaging: 12 pieces.

• Characteristics Part. S0876

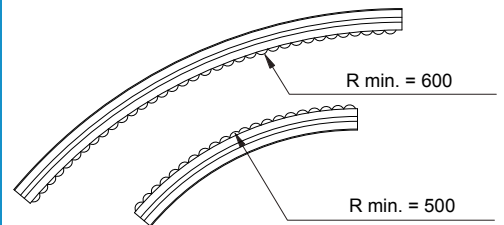
- Self supporting structure.
- Metal Profile in Austenitic stainless steel.
- Quick and easy installation by standard bolts.
- Can be used straight running and sideliflexing.

• Assembly Part. S0876

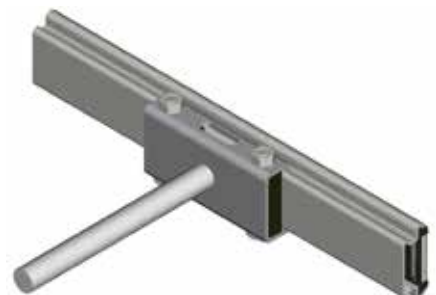
M10 hex head bolt



• Min. curvature radius Part. S0876



• Installation - side Usage



● Best Seller

● Standard

● On request: minimum quantity may apply. Consult our Customer Service for availability.

Item code for order = Part. + Code