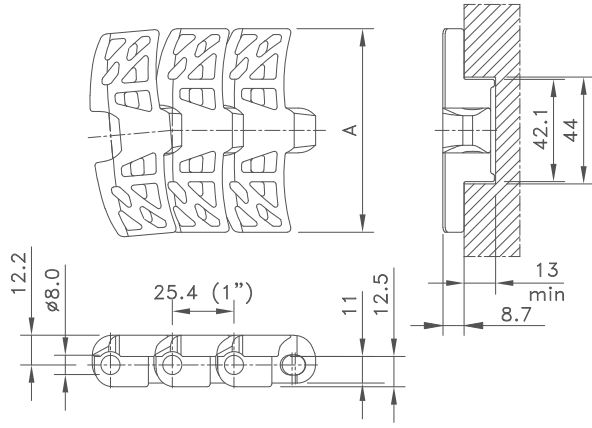
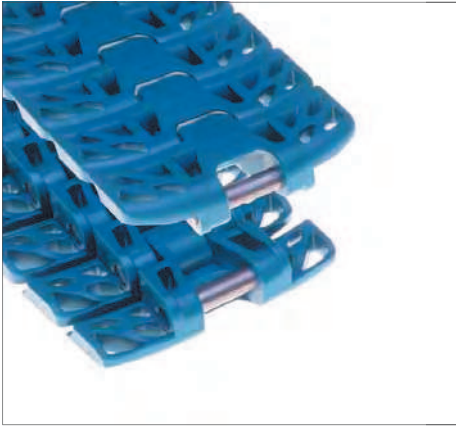


Flush Grid Magnetflex® 1050

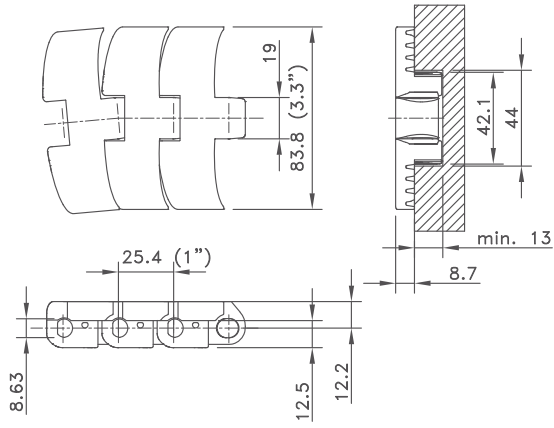
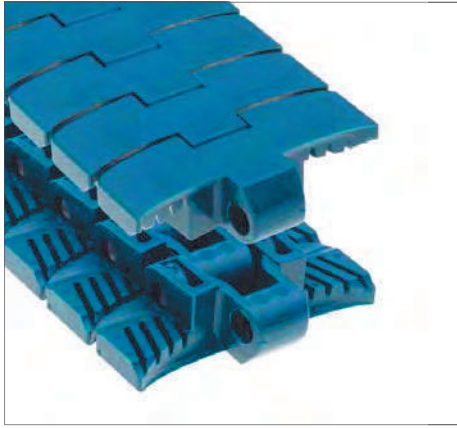


Chain Type	Code Number	Plate Width A		Weight kg/m	Sideflex Radius (min) mm	Working Load (max.) N (21°C)	Backflex Radius (min) mm	Plate Thickness mm
		mm	inch					
XLG-Acetal								
FGM 1050 XLG	749.11.31	83.8	3.30	1.54	500	1650	130	8.7
PEX Advanced Performance Polymer Alloy								
FGM 1050 PSX	749.10.52	83.8	3.30	1.54	500	1650	130	8.7

Standard length: 3.048 m - 10 feet (120 links).



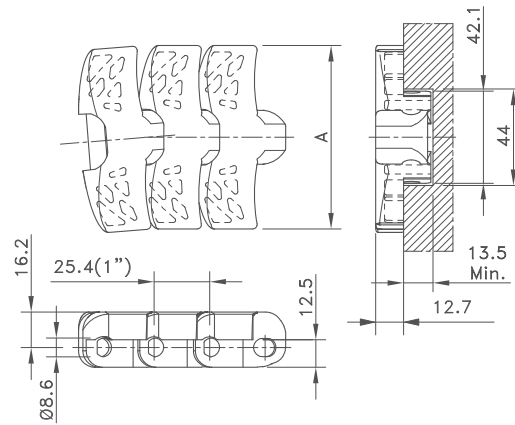
FlatTop Magnetflex® 1060



Chain Type	Code Number	Plate Width A		Weight kg/m	Sideflex Radius (min) mm	Working Load (max.) N (21°C)	Backflex Radius (min) mm	Plate Thickness mm
		mm	inch					
XLG-Acetal								
FTM 1060 XLG	749.10.06	83.8	3.30	1.68	500	1900	130	8.7
PSX Advanced Performance Polymer Alloy								
FTM 1060 PSX	749.10.49	83.8	3.30	1.68	500	1900	130	8.7
BWX-Polyamide Composite								
FTM 1060 BWX	749.10.55	83.8	3.30	1.68	500	1900	130	8.7

Standard length: 3.048 m - 10 feet (120 links).

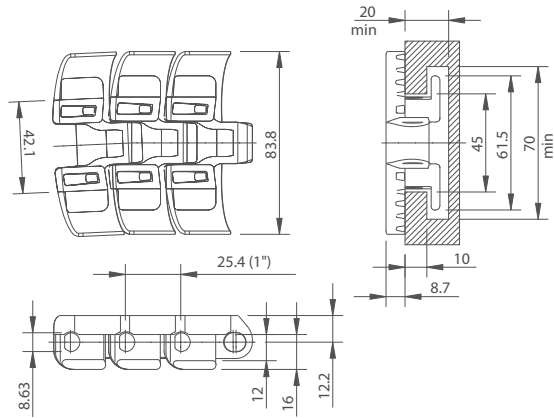
FlatTop Magnetflex® 1055



Chain Type	Code Number	Plate Width A		Weight kg/m	Sideflex Radius (min) mm	Working Load (max.) N (21°C)	Backflex Radius (min) mm	Plate Thickness mm
		mm	inch					
XLG-Acetal								
FTM 1055 XLG K330	749.41.31	83.8	3.30	1.90	500	2200	130	12.7
FTM 1055 XLG K450	749.41.42	114.3	4.50	2.20				
PSX Advanced Performance Polymer Alloy								
FTM 1055 PSX K330	749.10.53	83.8	3.30	1.90	500	2200	130	12.7
BWX-Polyamide Composite								
FTM 1055 BWX K330	749.18.57	83.8	3.30	1.90	500	2200	130	12.7
FTM 1055 BWX K450	749.10.05	114.3	4.50	2.20				

Standard length: 3.048 m - 10 feet (120 links).

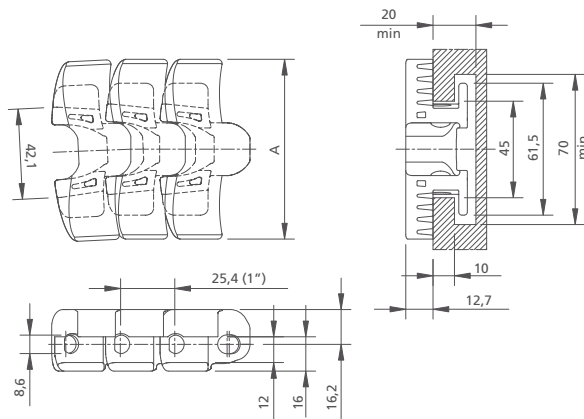
FlatTop 1050 Tab



Chain Type	Code Number	Plate Width A		Weight kg/m	Sideflex Radius (min) mm	Working Load (max.) N (21°C)	Backflex Radius (min) mm	Plate Thickness mm
		mm	inch					
XLG-Acetal								
FT 1050 XLG K330	749.61.31	83.8	3.30	1.93	500	1650	130	8.7
BWX-Polyamide Composite								
FT 1050 BWX K330	749.10.56	83.8	3.30	1.93	500	1650	130	8.7

Standard length: 3.048 m - 10 feet (120 links).

FlatTop 1055 Tab



Chain Type	Code Number	Plate Width A		Weight kg/m	Sideflex Radius (min) mm	Working Load (max.) N (21°C)	Backflex Radius (min) mm	Plate Thickness mm
		mm	inch					
XLG-Acetal								
FT 1055 XLG K330	749.71.31	83.8	3.30	2.13	500	2200	130	12.7
FT 1055 XLG K450	749.10.39	114.3	4.50	2.30	500	2200	130	12.7
BWX-Polyamide Composite								
FT 1055 BWX K330	749.10.57	83.8	3.30	2.13	500	2200	130	12.7
FT 1055 BWX K450	749.10.51	114.3	4.50	2.30	500	2200	130	12.7

Standard length: 3.048 m - 10 feet (120 links).